

# FC-Series Camera Quick Connect Guide



For installations that are using the Concealed Cable Mounting Arm, refer to the installation manual for instructions:  
FLIR FC-Series Installation Manual (427-0073-12-12)

## Caution!

Except as described in this guide, do not disassemble the FC-Series camera. Damage to the camera can occur as the result of careless handling or electrostatic discharge (ESD).

Prior to making any connections, ensure the power is switched off.

## Note

**Power:** Power Over Ethernet Plus (PoE+) or 14 - 32 Vdc or 18 - 27 Vac

**Power terminal blocks:** wire size from 16 AWG to 20 AWG

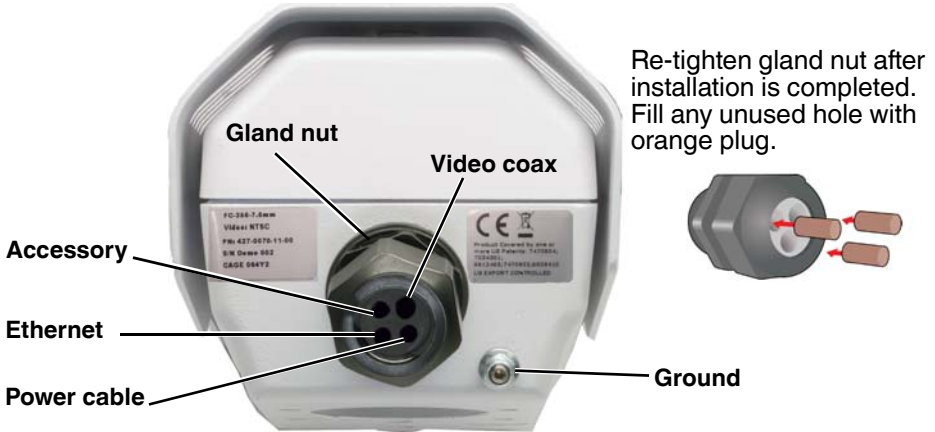
**Analog Video Cable:** BNC-terminated RG-59/U solid-center coax cable

**Accessory I/O Cable:** wire size 26 AWG, stranded (1 mm diameter including insulation)

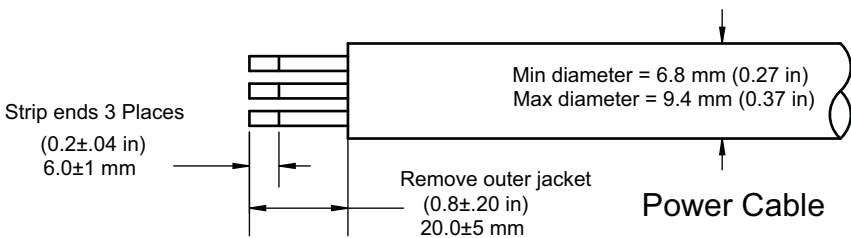
**Step 1** Remove cover: Using 3 mm hex key, loosen four captive screws. Removal of sunshield not necessary.



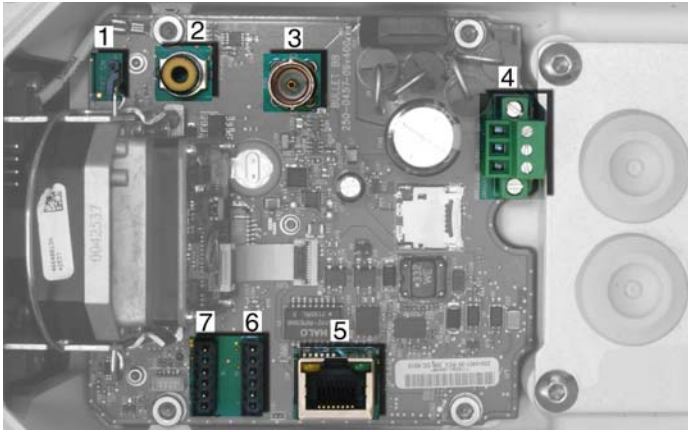
**Step 2** Install cables through sealing gland:



**Step 3** If using conventional power cable, strip cable as described below:



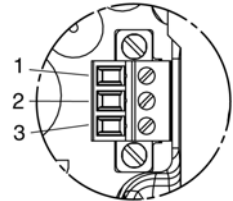
## Step 4 Terminate cables:



	Connection	Purpose
1	3-pin Jumper	Lens heater on/off
2	RCA	Analog video test point
3	BNC	Analog video
4	3-pin Terminal	AC/DC Power
5	Ethernet	PoE power, communications, IP video stream
6	6-pin terminal J8	General purpose I/O (GPIO)
7	Reserved for future use	Do not connect

**Table 1-1: Power Connector**

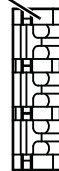
1	Chassis
2	Vac/dc -
3	Vac/dc +



**Table 1-2: GPIO Connections - J8**

Pin	Connection	Pin	Connection
1	Chassis ground	4	GPIO In (digital ground)
2	GPIO Out	5	GPIO In (+5V)
3	GPIO Out	6	Chassis ground

**Reserved J3**



**GPIO J8**



### Caution!

Pins 4 and 5 should not be connected to any voltages or power sources outside the camera. Damage to the camera may result.

- Step 5** Connect a ground wire between the ground stud on the back of the camera and the nearest earth-grounding point.
- Step 6** Test camera: Power on the camera and test video. Use a web browser to test IP communications (default IP: **192.168.250.116**; login: admin/fliradmin)
- Step 7** Tighten Cable seal gland nut to ensure a watertight seal.
- Step 8** Replace cover: Alternately tighten the four captive screws in the cover; torque to 1.8 N-m (16.0 in-lbs).

---

FLIR Systems, Inc.  
70 Castilian Drive  
Goleta, CA 93117  
USA  
PH: + 1 805.964.9797  
PH: + 1 877.773.3547 (Sales)  
PH: + 1 888.747.3547 (Support)  
FX: + 1 805.685.2711  
[www.flir.com](http://www.flir.com)

Corporate Headquarters  
FLIR Systems, Inc.  
27700 SW Parkway Ave.  
Wilsonville, OR 97070  
USA  
PH: +1 503.498.3547  
FX: +1 503.498.3153  
sales@flir.com

Ensure the camera is properly grounded. Failure to properly ground the camera can lead to permanent damage to the camera. Typical to good grounding practices, the camera chassis ground should be connected to the lowest resistance path possible. FLIR requires a grounding strap anchored to the grounding lug and connected to the nearest earth-grounding point.

Before installing the FC-Series camera you should read and understand the following documents which provide details regarding mechanical dimensions and installation safety.

- FLIR FC-Series Installation Manual (427-0073-12-12)
- FLIR FC-Series S Interface Control Document (427-00XX-XX-19S)

Documents provided on the documentation CD or from the FLIR website